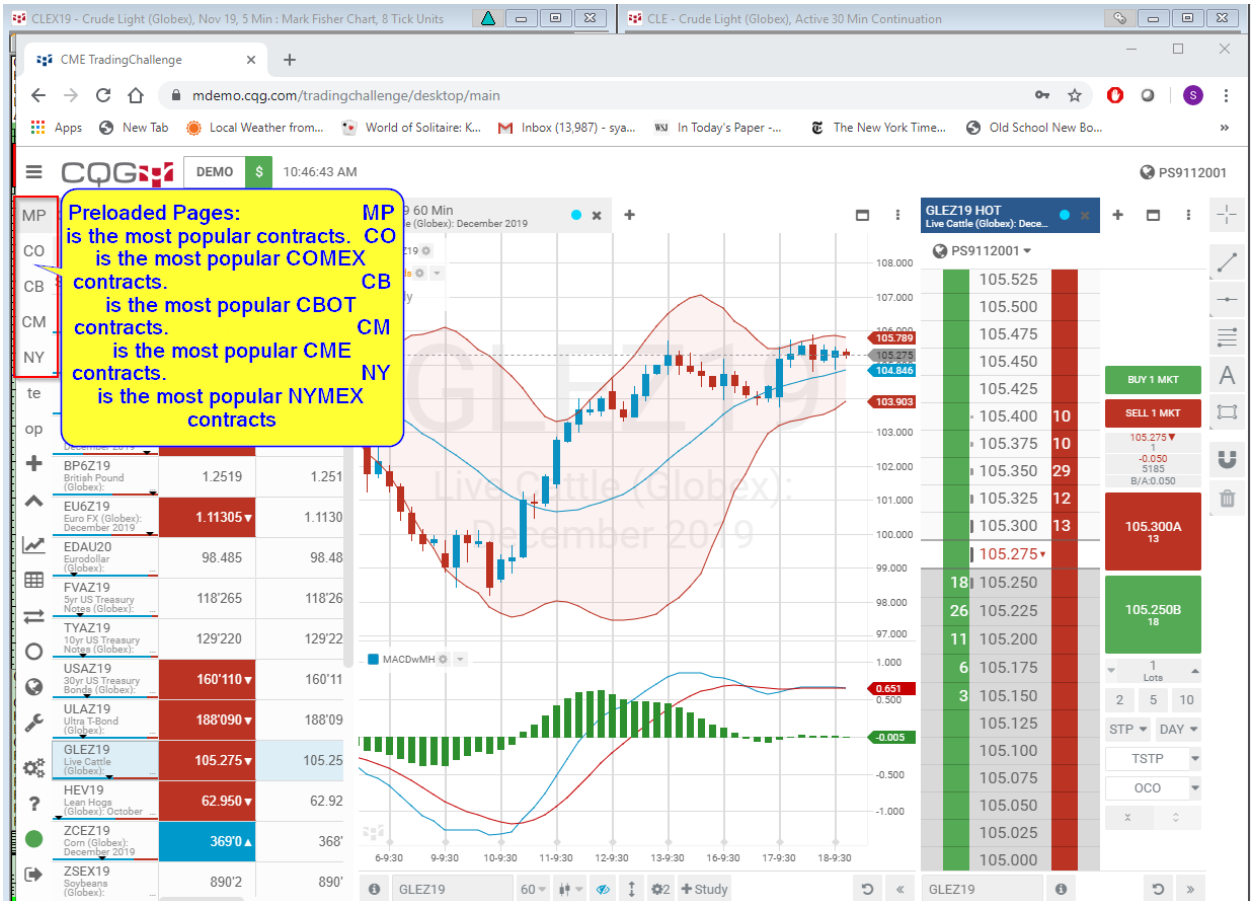


CME Group Desktop

Powered by CQG

1. Log on to <https://mdemo.cqg.com/tradingchallenge/desktop/logon>
2. Login with your personal trading login. Remember to use your new password if you have changed the password. No trading interface will retain your password, you will have to enter your password every time you login.
3. There are five preloaded pages.



For clarification the Chicago Boards of Trade features the grains, the Capital markets and the mini Dow Jones.

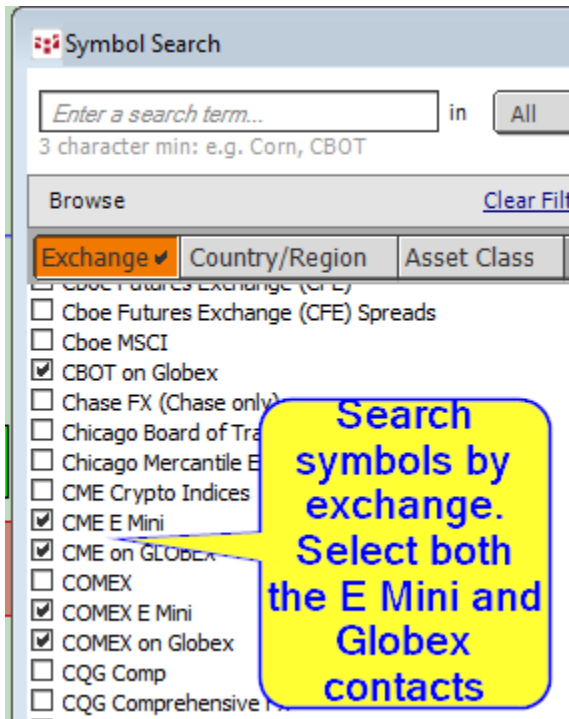
The Chicago Mercantile Exchange features the foreign currency, the money markets, livestock and the other stock indices.

The New York Mercantile Exchange features the energy contracts as well as platinum and palladium.

The Commodity Exchange of New York, COMEX, features the precious metals market and industrial metals.

You can see the CQG symbols finder for a complete list contracts by name of exchange.

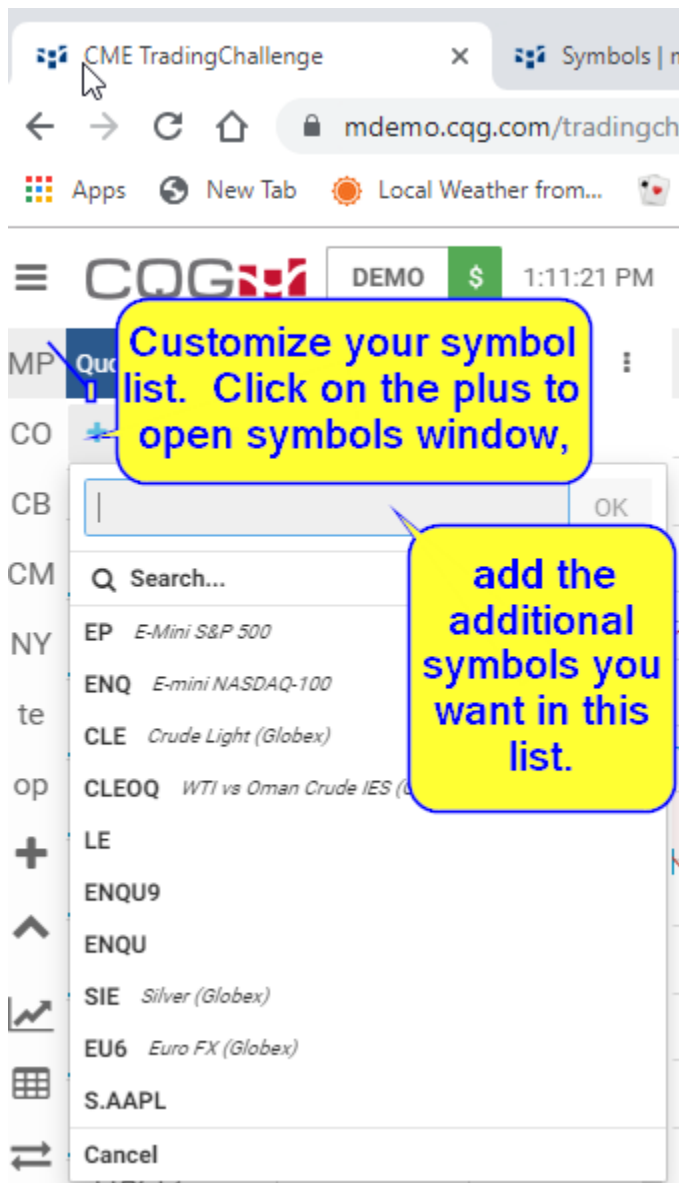
Select the both the mini contract and the Globex contracts.



Link for symbols search in Desktop, the above view is from CQG IC.
It may be easier to identify the symbols in the CQG IC.

<https://mhelp.cqg.com/cqg-desktop/symbols>

You can add symbols to any of the pages provided by clicking on the plus at the top of the widget.



If you want to create your own page, the easiest method is to click on the 3 horizontal dashes just to the left of the CQG to expand the page names.

Select one of the preset pages and click on the 3 dots to the left of the page name.

Select duplicate the page.

On the new page click on the 3 dots and rename the window.

For the procedure for adding symbols then click on any of the symbols you do not want and delete.

The image shows a trading platform interface with a sidebar on the left and a main data table on the right. Three yellow callout boxes provide instructions:

- Use this to expand and contract sidebar:** Points to the hamburger menu icon in the top left corner.
- Click here to duplicate a page:** Points to the 'Duplicate page' option in a context menu that appears over the 'MP my page' item in the sidebar.
- Duplicate page and rename new page:** Points to the 'Rename page' option in the same context menu.

The main data table displays market data for various symbols:

| Symbol | T | B |
|---|----------|---|
| HOEV19 NY Harbor ULSD: | 1.9725 ▼ | |
| | 1.6564 ▼ | |
| | 2.634 ▼ | |
| | 58.03 | |
| Gold (Globex): December 2019 | 1500.8 | |
| YMZ19 E-mini Dow (\$5): December 2019 | 27172 | |
| ZSEX19 Soybeans (Globex): | -- | |

For more information on other functionality see our help menu.

<https://mhelp.cg.com/cg-desktop/overview>